



PARANÁ STATE

5TH

LARGEST ECONOMY IN BRAZIL

11 MILLION

INHABITANTS

9.4 million / 85.4% in urban area

1.6 million in the rural area

GDP OF

US\$91,36 BILLION

LARGER THAN URUGUAI, BOLIVIA AND
PARAGUAI COMBINED

The State of Paraná has one of Brazil's most representative and diversified industries, with more than 30 thousand establishments, employing more than 670 thousand workers.

51,9%

commerce and
services sector

26,1%

industry

8,5%

agriculture and
cattle farming

PARANÁ BECAME THE SECOND MOST COMPETITIVE STATE IN BRAZIL

Altogether its privileged location, excellent infrastructure, and a skilled workforce make the State of Paraná one of the best business environments in the country.

It leads the ranking among the States, with AA+ rating, according to the Fitch risk agency

PRIVILEGED LOCATION

WITH EASY CONNECTION TO 264 MILLION MERCOSUL CONSUMERS.

39 AIRPORTS

INCLUDING FOZ DO IGUAÇU INTERNATIONAL AIRPORT AND AFONSO PENA INTERNATIONAL AIRPORT WITH CARGO TERMINALS.

BEST ROAD NETWORK IN SOUTHERN BRAZIL

120.9 THOUSANDS KM OF ROADS 2,400 OF RAILWAYS

Paraná's highways are notorious as the best roads in the Southern Region of Brazil by the country's National Transport Confederation.

4th ECONOMY IN BRAZIL.

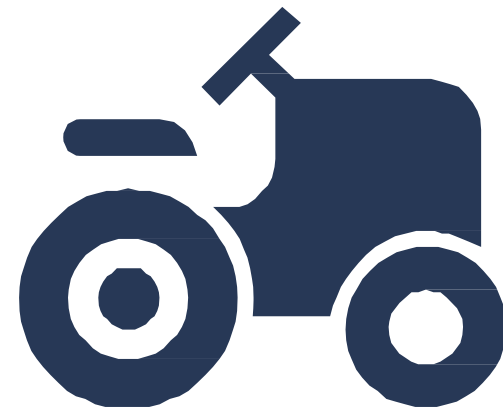
PARANAGUÁ: 2ND LARGEST PORT IN BRAZIL

IN CONTAINERS TRANSPORT, WITH MORE THAN 1.1 MILLION CONTAINERS HANDLED IN 2021.

ACCESS BY OPEN WATER TO 3 OTHER PORTS AND PORT WAREHOUSES.



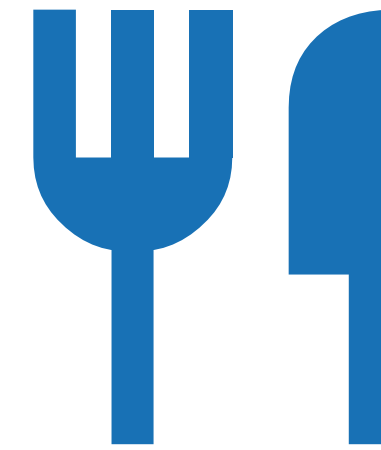
AGRIBUSINESS AND
AGROINDUSTRY



WELLNESS



ICT AND DIGITAL
ECONOMY



FOOD AND BEVERAGE



AUTOMOTIVE



WOOD PAPER
AND CELULOSE

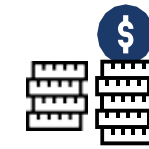
Employment and Income



▲ 672,181
Jobs (2020)
3.2% Variation
compared to 2019



▼ 31,910
Companies (2020)
0.0% Variation
compared to 2019



R\$ 22.4 bi
Total anual wage
(2020)



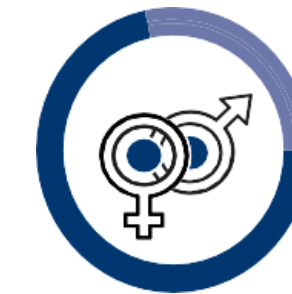
R\$ 2,567.93
Average monthly
income (2020)



10.7%
Workers with
completed higher
education (2020)

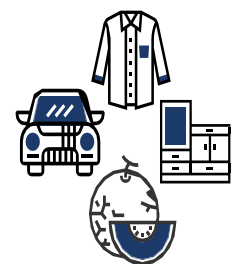


55.6%
Workers with
completed secondary
education (2020)



27.3%
Women workforce
(2020)
72.7%
Men workforce
(2020)

Production and Sales



R\$ 252.4 bi
Gross production (2019)
▲ 0.9% Variation
compared to 2018

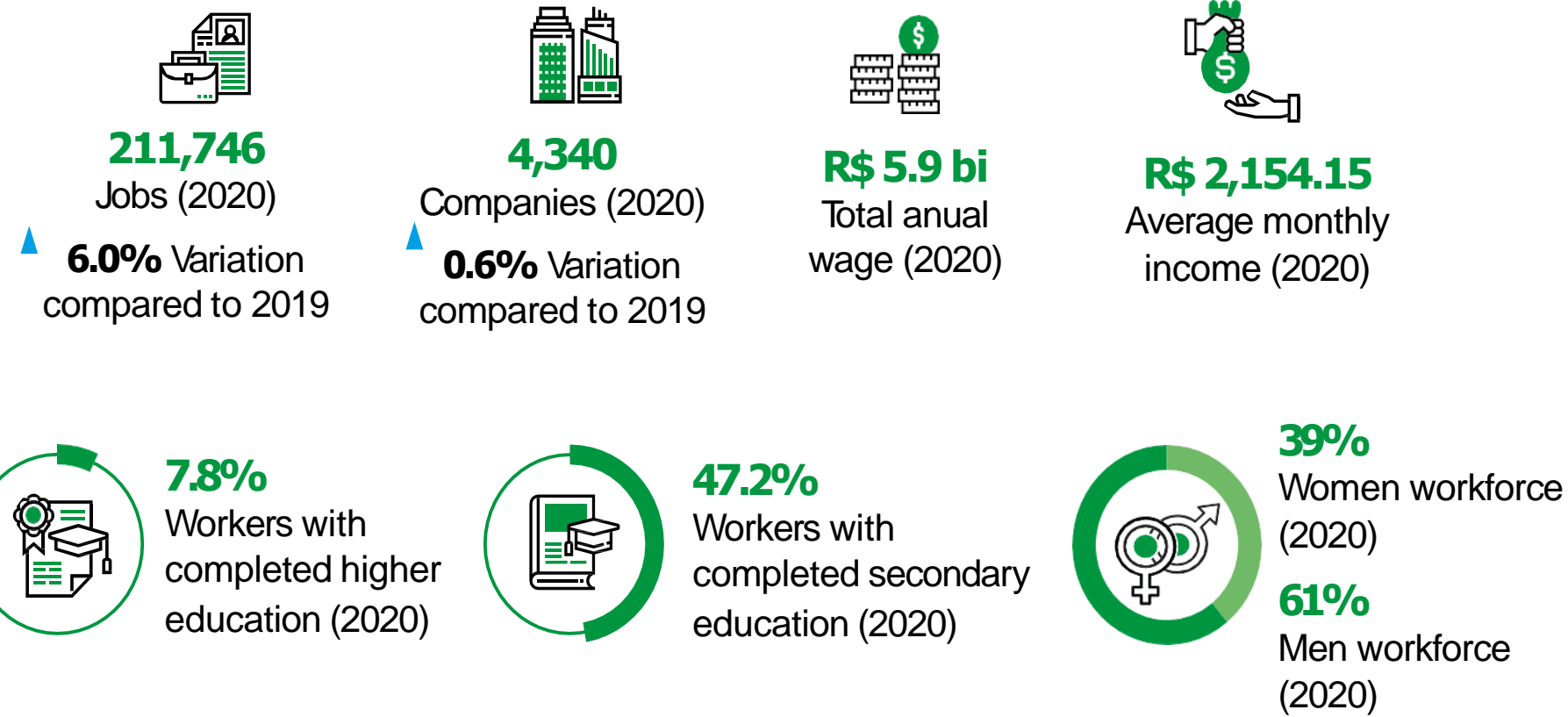


R\$ 285.1 bi
Net sales revenue (2019)
▲ 4.9% Variation
compared to 2018



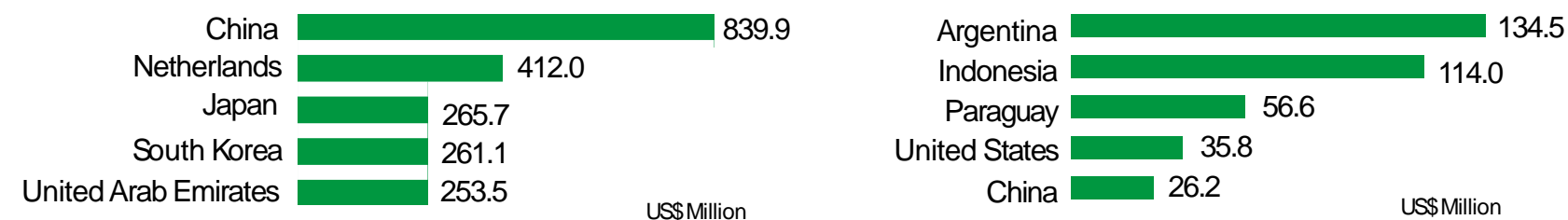
R\$ 97.2 bi
Industrial transformation
value - VTI (2019)
▲ 1.5% Variation
compared to 2018

Employment and Income



International Trade

Paraná / World



Highlights

4 3 4 0 INDUSTRIES

GENERATING USD 2.8 BILLION IN SALES ANNUALLY IN THE DOMESTIC AND FOREIGN MARKETS.

THE LARGEST PRODUCER

OF WHEAT, BARLEY, BEANS AND POULTRY OF BRAZIL

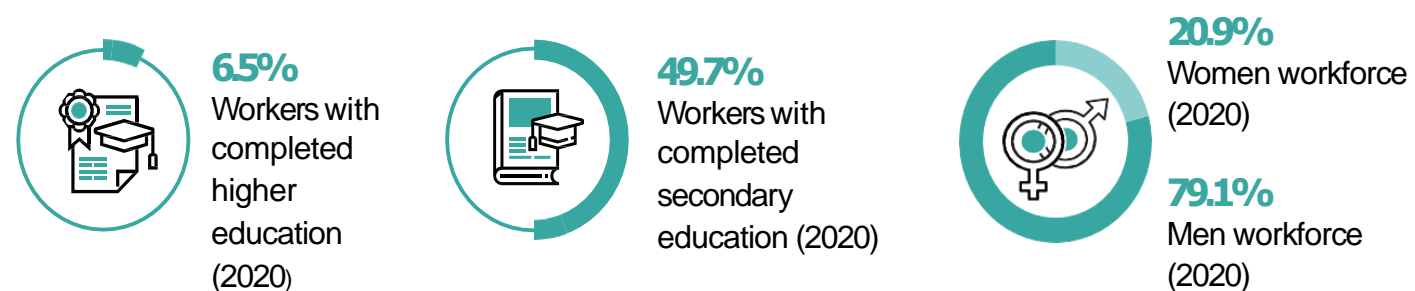
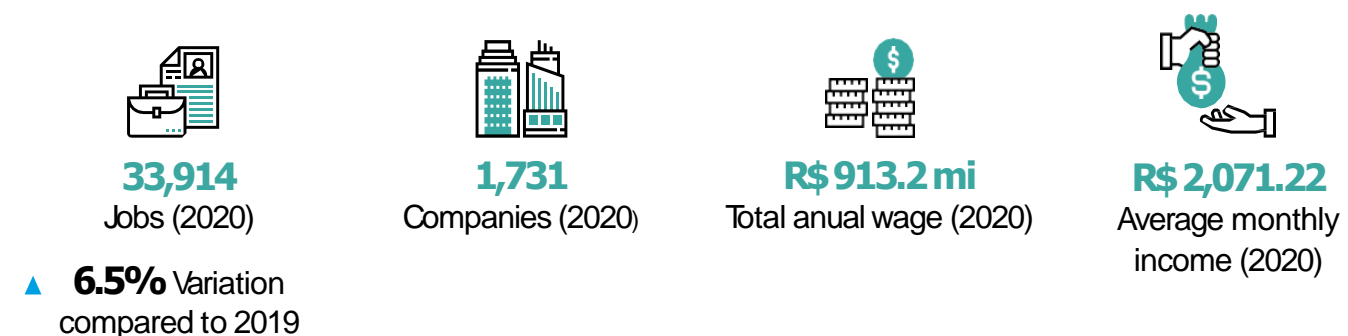
SECOND PRODUCER OF CORN, SOYBEAN, MILK AND PORK MEAT.

2ND LARGEST

EXPORTING STATE OF BRAZIL

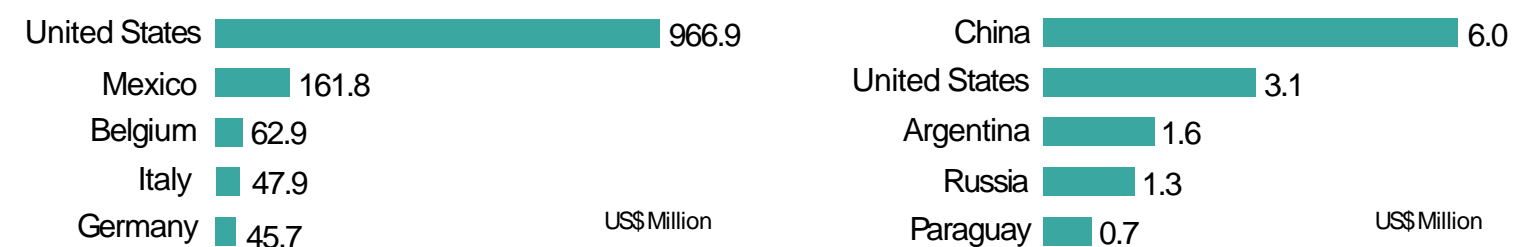
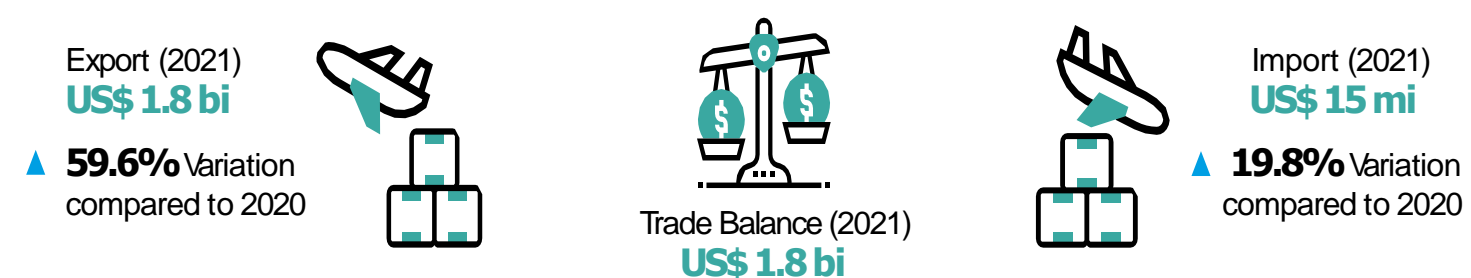
WOOD SECTOR

Employment and Income



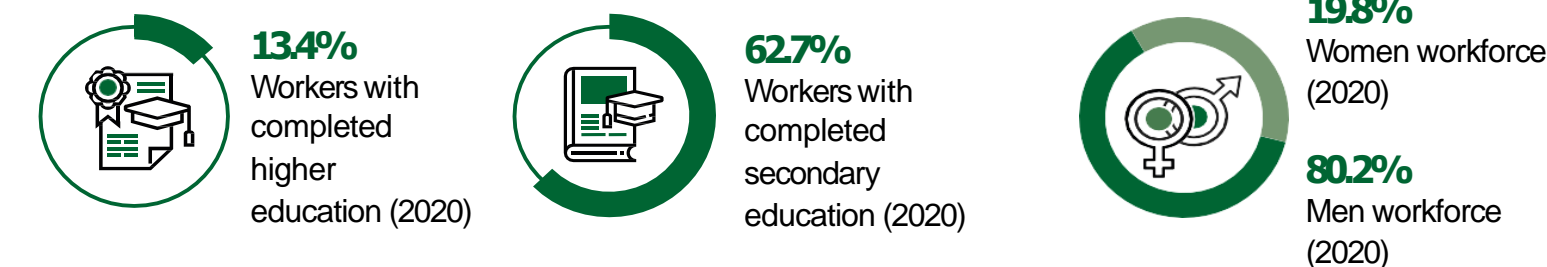
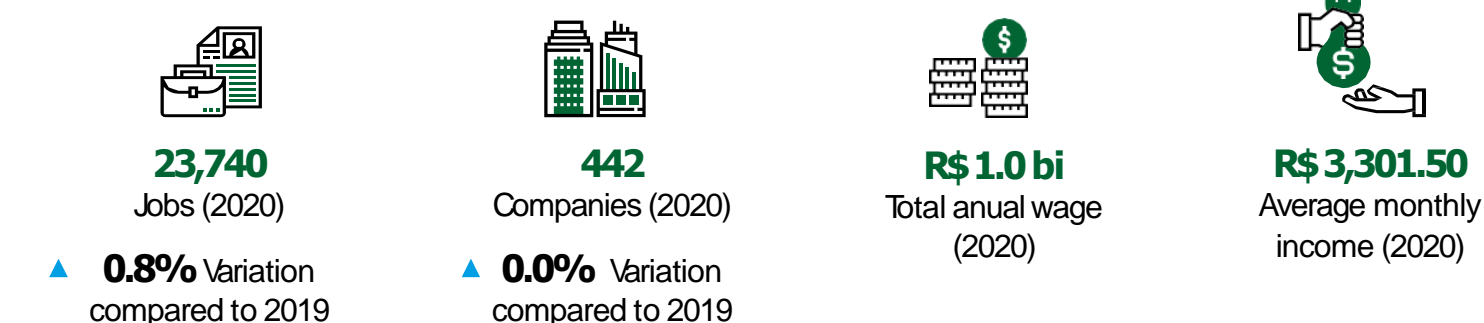
International Trade

Paraná / World



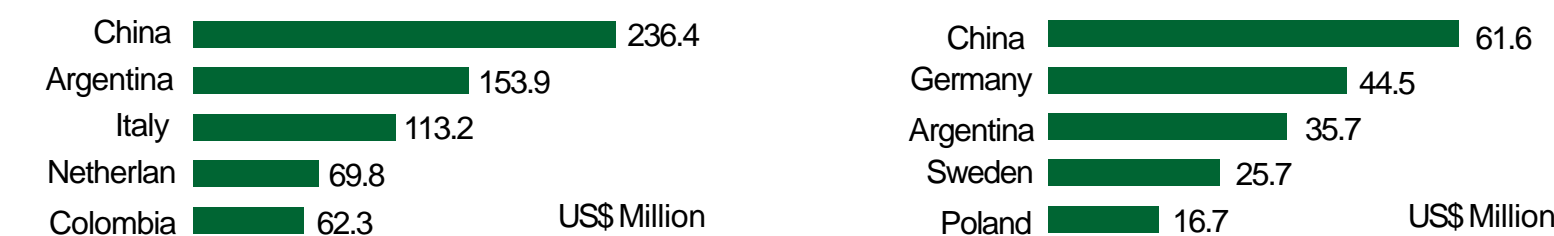
CELLULOSE AND PAPER SECTOR

Employment and Income



International Trade

Paraná / World

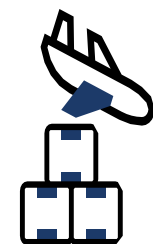


Paraná / World

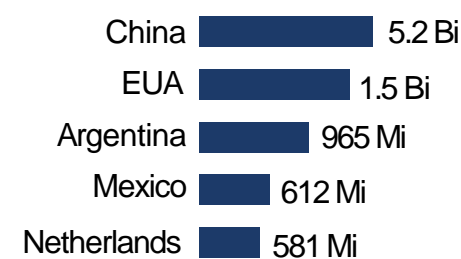
Export (2021)
US\$ 19 bi



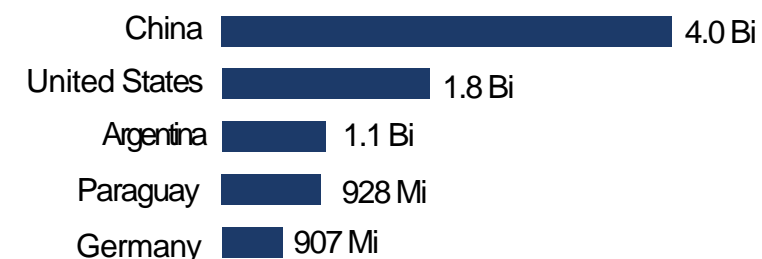
Trade balance (2021)
+ US\$ 2.1 bi



Import (2021)
US\$ 16.9 bi



US\$



US\$

Export - Products (2021)

Description	US\$ billion
Soybeans and soybean oil	4.6
Meat and edible offal, fresh, chilled or frozen of poultry	3.19
Wood, charcoal and wood products	1.84
Automotive vehicles and its parts	1.40
Prepared animal feeds	1.40

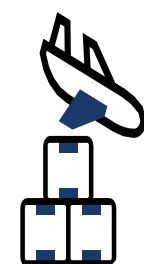
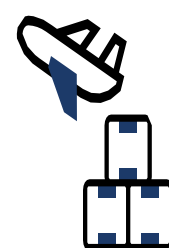
Import - Products (2021)

Description	US\$ billion
Machines, appliances and mechanical instruments, and their parts	2.23
Mineral or chemical fertilizers	1.91
Parts and accessories for motor vehicles	1.87
Fuel, petroleum oils and oils obtained from bituminous minerals	1.85
Chemical products	1.24

Paraná / Ukraine

(2021)

Export (2021)
US\$ 29.2 Mi



Import (2021)
US\$ 3.4 Mi

Export - Products (2021)

Description	US\$
Various food preparations	15 Mi
Sugar and sugar confectionery	9.4 Mi
Machines, appliances and mechanical instruments, and parts	1.6 Mi
Meat and edible offal	1.0 Mi
Tobacco and its manufactured equivalents	849 K

Import - Products (2021)

Description	US\$
Rubber and its articles	1.4 Mi
Plastics and their articles	1.4 Mi
Machines, appliances and electric materials, and their parts	243 K
Products of the milling industry; malt; starches; inulin; wheat	114 K
Articles of stone, plaster, cement, asbestos, mica or similar materials	61 K

INSTITUTIONAL RELATIONS

GOVERNMENT, MUNICIPALITIES,
CHAMBERS OF COMMERCE,
CONSULATES, TRADE ENTITIES,
INVESTMENT AGENCIES



SPECIAL PROJECTS

EPZ (EXPORT PROCESSING ZONE),
INVEST CIDADES (SUPPORT TO THE CITIES OF THE
STATE TO ATTRACT INVESTMENTS),
SUSTAINABLE REGIONAL VOCATIONS PROGRAM



COMPANY SUPPORT

PARANÁ COMPETITIVO PROGRAM (TAX
INCENTIVES PROGRAM FOR INVESTMENTS IN
THE STATE),
MARKET INFORMATION, SITE LOCATION
FOR COMPANIES, DATA AND ANALYSES



INTERNATIONAL BUSINESSES SUPPORT

MARKET ACCESS,
PNCE (EXPORT PROGRAMS)



INNOVATION

INOVA INVEST (PROGRAM FOR
STARTUPS AND TECH COMPANIES),
INVEST PASS (PROGRAM TO
PROMOTE SUSTAINABLE PROJECTS)



**INTERNATIONAL MISSIONS
INTERNATIONALIZATION**

TRAININGS, WORKSHOPS,
MATCHMAKING, EVENTS



THIS IS PARANÁ

Ready to do
business with you

WWW.INVESTPARANA.ORG.BR

GIANCARLO ROCCO

DIRECTOR OF INTERNATIONAL RELATIONS

rocco@investpr.org.br